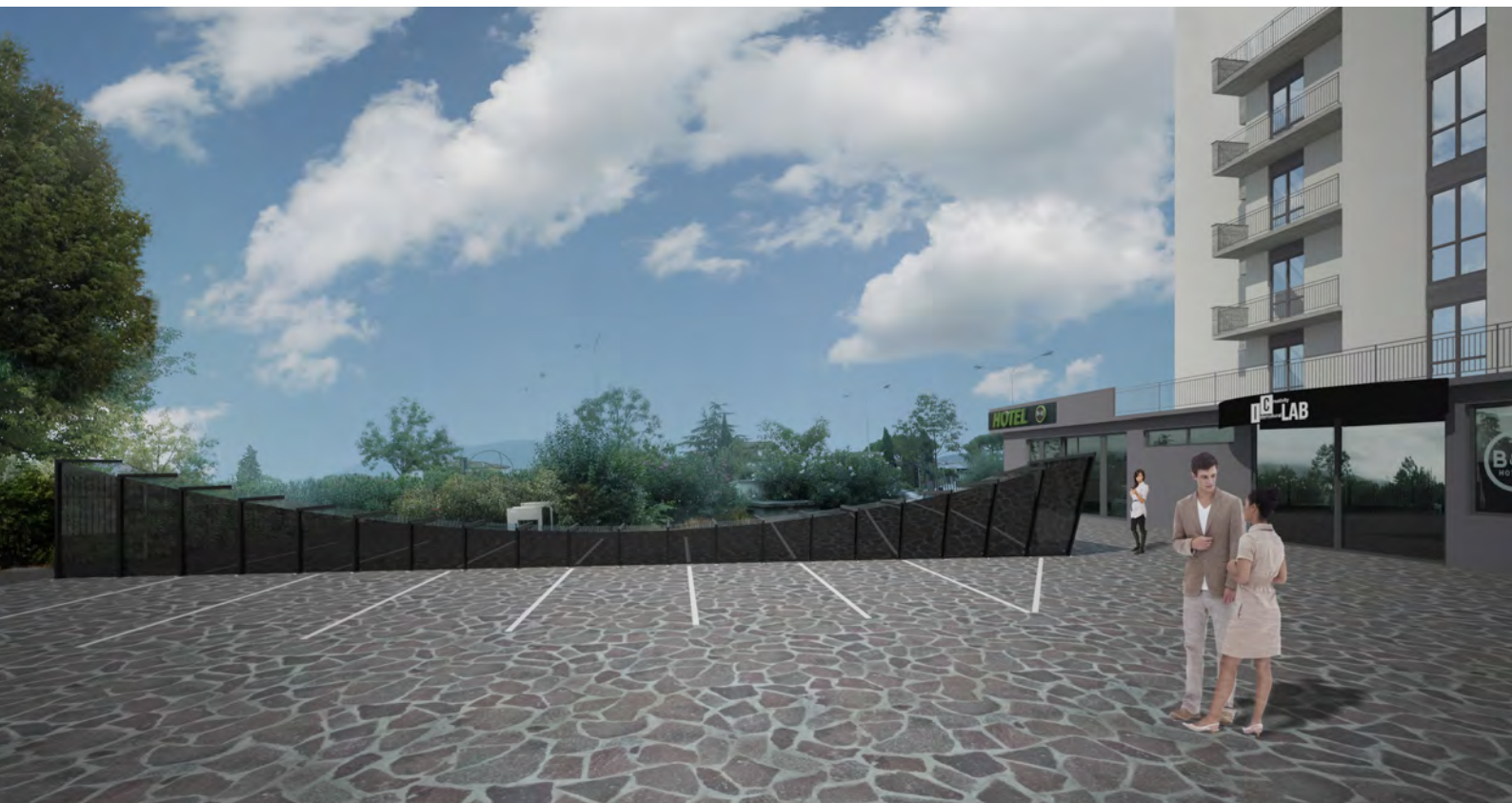




# INTERNATIONAL CONCEPT AND DESIGN COMPETITION

## CALL FOR PROPOSALS FOR THE ICLAB INTERCULTURAL CREATIVITY LABORATORY



## THE UNDERLYING IDEA AND SELECT CRITERIA

The project was inspired by the founding principles of the ICLAB center: *flexibility*, *dynamism* and *creativity*. Proceeding according to this source of inspiration, the project aims to create a skylight/glass roof as an external symbol of what happens inside the multicultural center. The proposed skylight/glass roof winds inward, transforming itself from a simple form to a more complex one en route and thus representing the way culture and cultural exchanges between different peoples can make every individual more dynamic.

Overall, the project aims to resolve the issues indicated in the competition announcement in a unified way, melding the themes of luminosity, modernity and practicality with a *green spirit* that moves from the inside outwards. The new suspended canopy would become a unifying feature of the two entrances to the building, as explained further on.

Analyzing the present situation, the fact that the current, single stairway is in such an out-of-the-way and hidden position in relation to the elevator does not seem to fully resolve the needs of the building when there are major crowds. Although not specifically indicated in the announcement, nonetheless, the project attempts to resolve this contradiction by ideally creating two flights of stairs as the best solution for the multi-purpose usage of the space. A new flight of stairs, facing the hotel, would become the main, non-mechanized entrance in the case of the space being used for a single purpose, or a separate entrance in the case of the *Meeting Room* being used separately from the *Exposition Hall*. The best position would seem to be at the center next to the suspended canopy near the door that indicates the ICLAB and leads to the elevator. By creating toilet facilities behind the *green wall*, the two macro-spaces could be made completely independent.

The other, more distanced, existing flight of stairs could be used both to separate the entrance from the exit in the case of major crowds and as an emergency exit. As this stairway is farther from the entrance overhang, it would seem less ideal as an access since it is too decentralized and hidden in relation to the building.



FUNCTIONS AND DISTRIBUTION  
(SCALE 1:400)

## PROJECT ANALYSIS

### THE SKYLIGHT

Analyzing the project in detail, the existing r.c. wall would be demolished and a skylight/glass roof would be created consisting of repeated modular elements whose overall form would indicate the presence of an underground space. The plasticity of the structure would propel it toward the hotel entrance as it sweeps upward. The elements would be in burnished/painted steel to create a subtle play of light both in daylight and at night, through changes in lighting and color. In the nocturnal renderings, only white light has been considered but by using RGB LED/lights, the structure could also change color for specific events. The projected structure has a minimum central height of 80cm, rising to a maximum height of 2.30m at the main entrance.

### THE SUSPENDED CANOPY

The new suspended canopy would affix to the existing structure and finally create a point where the cultural center is clearly and distinctly identifiable. The projected structure is very simple and curved. The colors chosen are black and white, which go well with the existing building while being different and recognizable. The logo would be back-lit and, here again, the same concept of modifying the color of the lights at night for events as expressed for the RGB lights and the skylight could be applied.

### INTERIOR

The exterior would merge with the interior through the *green wall*, an element characterizing both the outside and the inside, that would symbolically unite the themes of light and creativity with sustainability, an essential theme today for the future.

The wall would be visible from the *Meeting Room* through the large openings facing the corridor. It was decided to create a wall that was symmetric from the center towards the exterior, to indicate the direction of the two flights of stairs (entrance-emergency exit), and which would allow the most light to enter the interior. The wall would then transform itself at the stairs by incorporating the stairs themselves. An ideal compromise between screening the stairs and their visibility from the interior was achieved using the wall to indicate the presence of the stairs while keeping them from being too invasive for the functionality of the rooms.

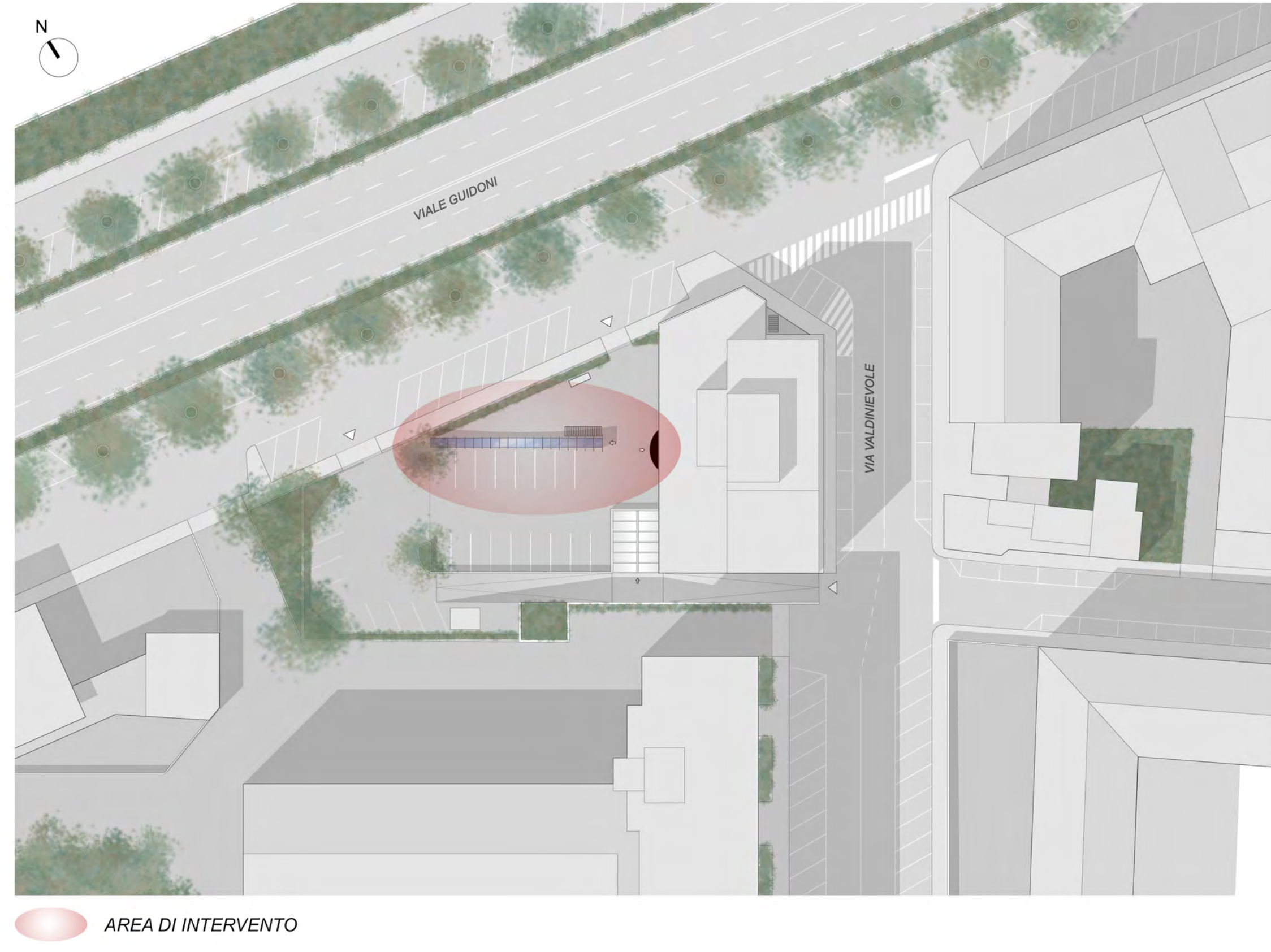
It was decided to focus on simple materials, leaving the walls in cement and choosing a cementitious resin/concrete screed, which would let the play of light and green color of the *green wall* prevail.

## CONCLUSIONS

Overall, the project proposes to resolve the competition announcement requests in a distinctive way, choosing a unifying, simple and contemporary language. The project aims to respond to the problem areas present in the structure, striving to resolve them with a single project that addresses, as far as possible, all of the identified issues.



GENERAL PLAN  
(SCALE 1:500)



UNDERLYING IDEA AND SELECT CRITERIA  
(EXTRACT FROM TECHNICAL REPORT)

The project was inspired by the founding principles of the ICLAB center: **flexibility, dynamism and creativity.**

The project aims to create a skylight/glass roof as an **external symbol** of what happens inside the multicultural center.

The skylight/glass roof winds inward, transforming itself from a simple form to a more complex one en route and thus representing the way culture and cultural exchanges between different peoples can make every individual more dynamic.

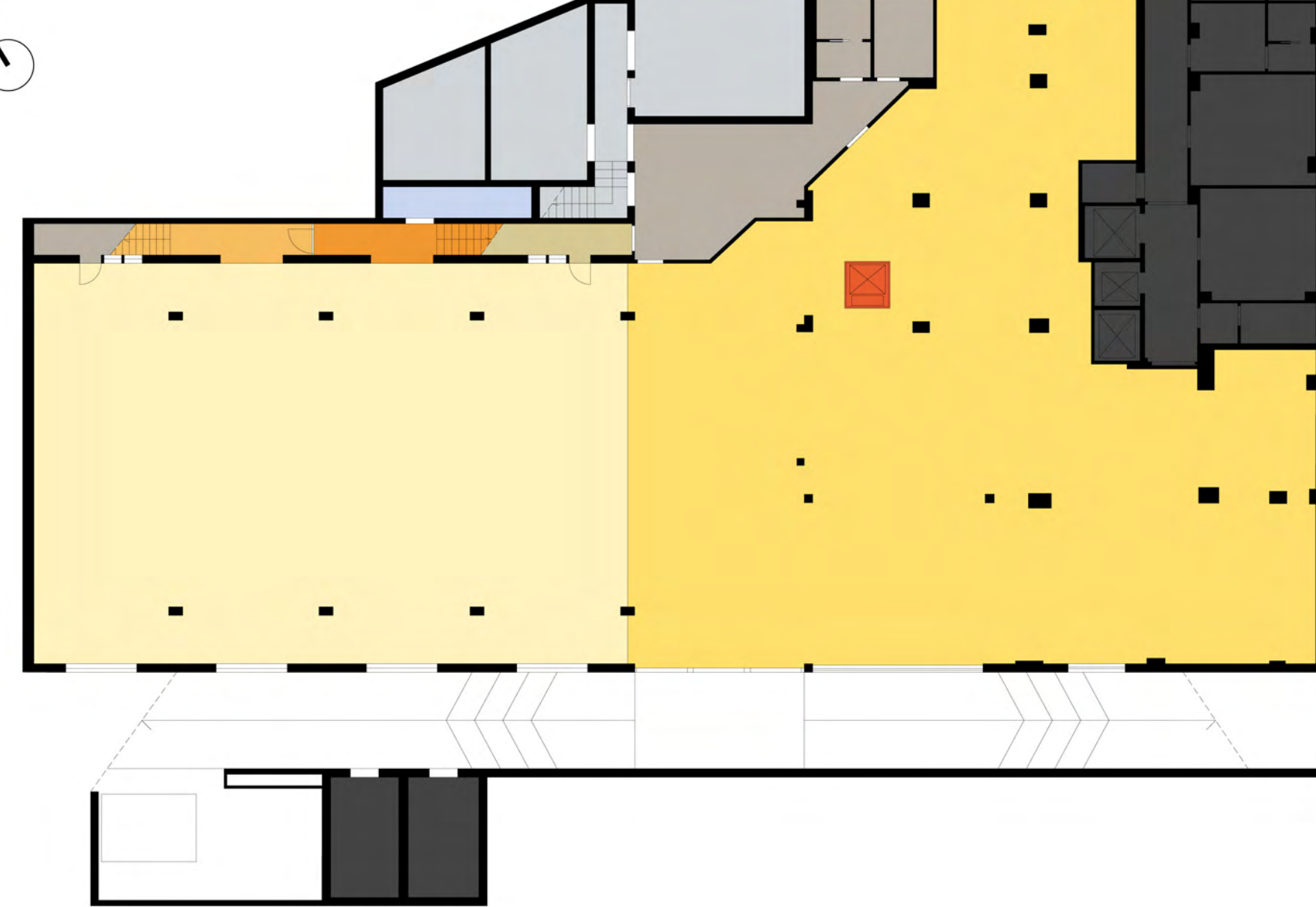
The project aims to resolve the issues indicated in the competition announcement in a unified way, melding the themes of luminosity, modernity and practicality with a **green spirit that moves from the inside outwards.**

Analyzing the present situation, the current, single stairway is in such an out-of-the-way and hidden position. The project attempts to resolve this contradiction by ideally creating **two flights of stairs as the best solution for the multi-purpose usage of the space.**

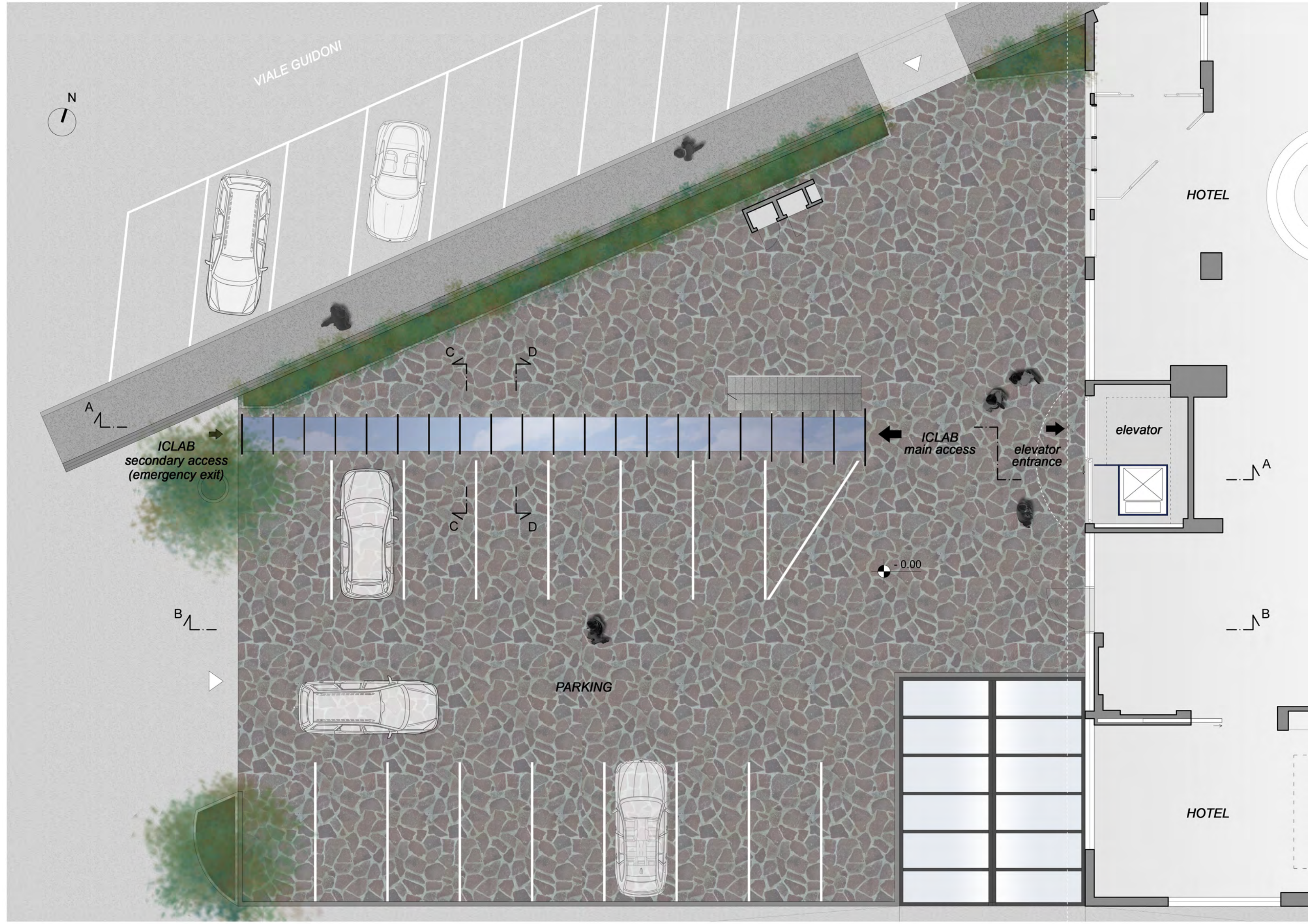
A new flight of stairs, facing the hotel, would become the main, non-mechanized entrance in the case of the space being used for a single purpose, or a separate entrance in the case of the Meeting Room being used separately from the Exposition Hall.

FUNCTIONS AND DISTRIBUTION  
(SCALE 1:200)

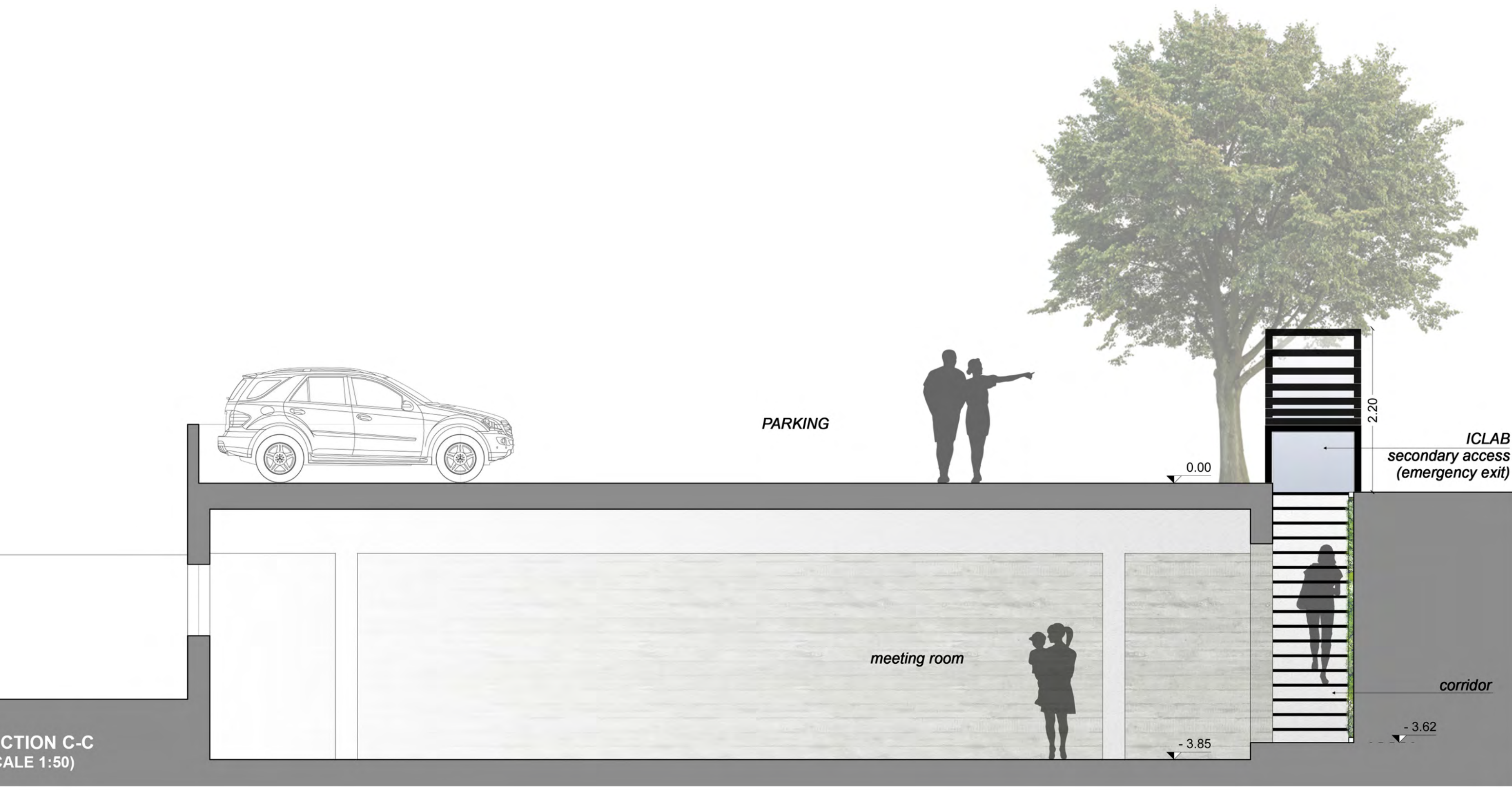
- ICLAB MAIN FUNCTIONS**
- EXPOSITION HALL
  - MEETING ROOM
- ACCESSES AND PATHS**
- MAIN ACCESS to the EXPOSITION HALL
  - MAIN ACCESS to the MEETING ROOM
  - SECONDARY ACCESS (EMERGENCY EXIT)
  - SERVICE CONNECTION
- SERVICES**
- KITCHEN and STORAGE ROOM
  - TOILET
  - TECHNICAL ROOM
  - OTHER FUNCTION



GROUND FLOOR PLAN  
(SCALE 1:100)



SECTION C-C  
(SCALE 1:50)



SECTION B-B  
(SCALE 1:50)







BASEMENT PLAN  
(SCALE 1:50)

SECTION D-D  
(SCALE 1:50)

SECTION A-A  
(SCALE 1:50)

